



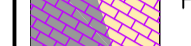




- KEY:
-  ROAD
  -  PROPOSED PARKING BAY
  -  PROPOSED IMPRINT SURFACING
  -  PROPOSED FOOTWAY WIDENING
  -  PROPOSED ON FOOTWAY LOADING BAY
  -  PROPOSED PLANTING
  -  EXISTING FOOTWAY

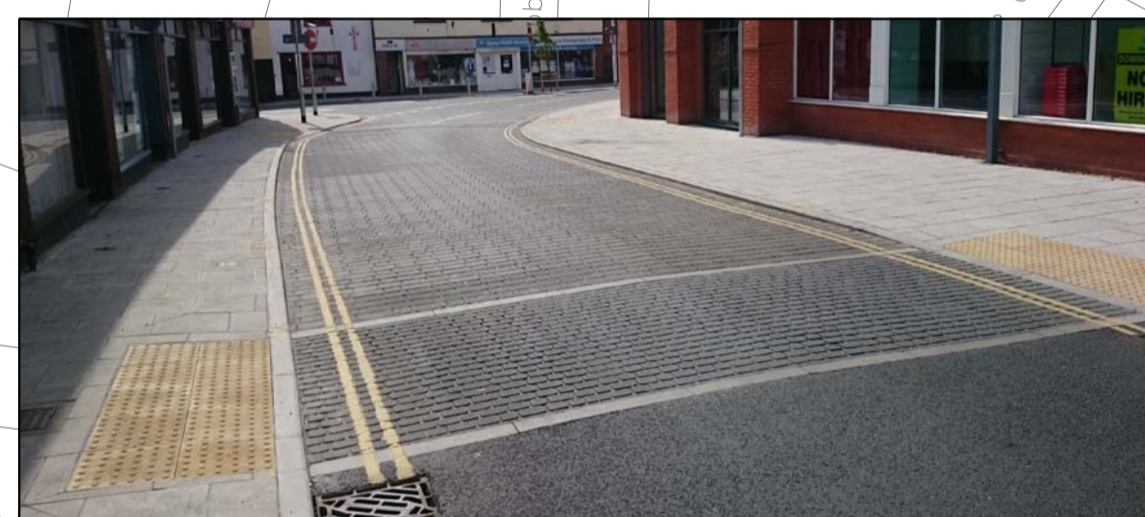
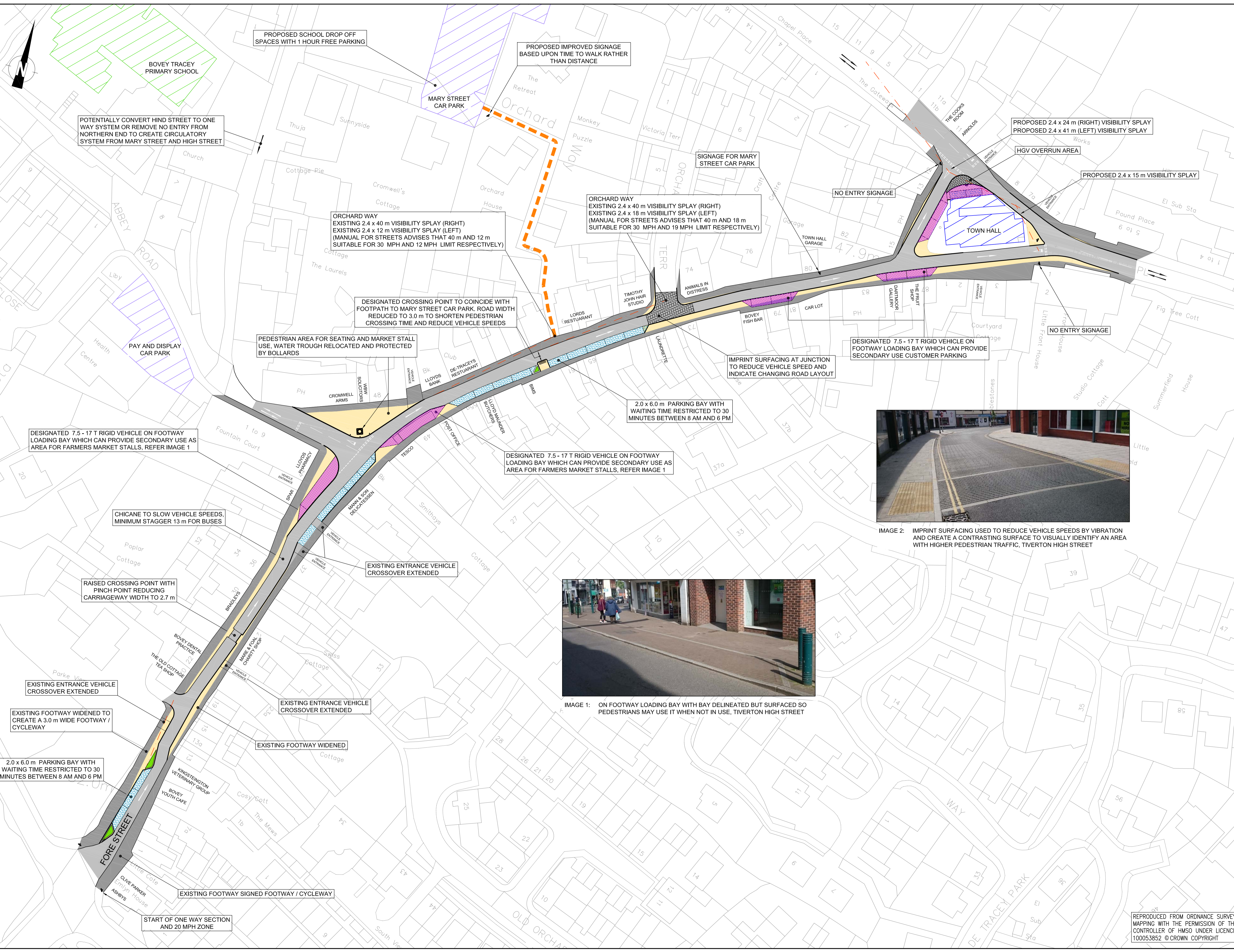


IMAGE 2: IMPRINT SURFACING USED TO REDUCE VEHICLE SPEEDS BY VIBRATION AND CREATE A CONTRASTING SURFACE TO VISUALLY IDENTIFY AN AREA WITH HIGHER PEDESTRIAN TRAFFIC, TIVERTON HIGH STREET



IMAGE 1: ON FOOTWAY LOADING BAY WITH BAY DELINEATED BUT SURFACED SO PEDESTRIANS MAY USE IT WHEN NOT IN USE, TIVERTON HIGH STREET



JOB TITLE  
BOVEY TRACEY TMP  
DEVON

DRAWING TITLE  
OPTION 5  
ONE WAY SYSTEM  
FORE ST TO TOWN HALL PLACE

DATE  
JAN '17

DRAWN  
JT

CHECKED  
.

DRAWING NO.  
0192.005

REV  
D

SCALE  
1:500

© A1

REPRODUCED FROM ORDNANCE SURVEY MAPPING WITH THE PERMISSION OF THE CONTROLLER OF HMSO UNDER LICENCE 100053852 © CROWN COPYRIGHT

© This drawing is the copyright of Horizon Consulting Engineers Limited (Horizon) and shall not be reproduced or amended without the written approval of Horizon.